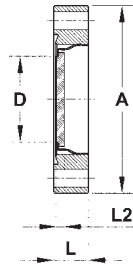


Special Viewports

Beryllium, Unexchangeable Window



Technical data

- Specifications
- Connection
- Leak rate
- Window material
- Flatness
- Magnetic type
 - flange material
 - glass-to-metal connection
 - temperature range

CF viewport with firmly connected beryllium window

CF flange

< 1.0E-10 mbar l/s

beryllium

< 8 λ

stainless steel - 304L (1.4307)

Kovar®

to 350 °C

Standard

Order code		Flange	A	D	L	L2
Magnetic	Non-magnetic					
VPZ16BE-MB	VPZ16BE-MS-NM	DN16CF	34	16	12.7	0.25
VPZ40BE-MB	VPZ40BE-MS-NM	DN40CF	70	32	12.7	0.5
VPZ40LABE-MB	-	DN40CF	70	38	12.7	0.5

Viewports with Flanged Socket

KF, ISO And CF Viewports with Flanged Socket



KF, ISO and CF viewports with flanged socket made of different glass materials are available on request. Please contact your customer advisor or send a request for quotation to: info@vacom-vacuum.com.

Viewport Shutters

Viewport Shutters, Manual

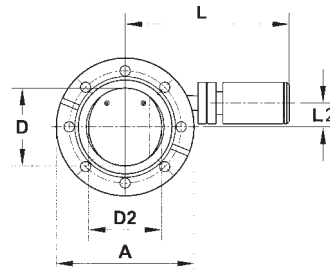
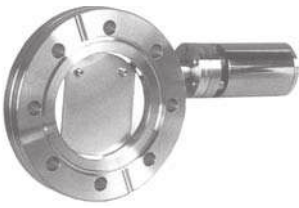
Viewport Shutters

Due to different flange standards and tube dimension viewports shutters are available in sizes DN63, DN100 and DN160 also with smaller blades. This option is specified by an "S" at the end of the order code

MD16 Drive

The MD16 MagiDrive serves as drive for all viewport shutters. The basic version of the rotary feedthrough is equipped with an internal friction brake. This enables to pivot and hold the shutter in any position. Other drive options for the rotary feedthrough are shown on page 8-18ff.

These viewport shutters are also appropriate to RHEED applications due to very low magnetic stray fields.



Technical data

- Specifications
- Drive
- Connection
- Bakeable to

Viewport shutters serve the protection of the vacuum side of the viewport during coating processes. Four flange dimensions are available.

mechanical rotary feedthrough type MagiDrive MD16
CF flange
to 250 °C

Standard shutters

Order code	Flange	A	D	D2	L	L2
VPS40	DN40CF	70	37	31.8	116	10
VPS64	DN63CF	114	63.5	57	135	19.5
VPS100	DN100CF	152	101.6	87	158	35.5
VPS160	DN160CF	203	152.4	133.2	173	52.5

Small shutters

Order code	Flange	A	D	D2	L	L2
VPS64S	DN63CF	114	60.3	57	135	19.5
VPS100S	DN100CF	152	96.8	83.4	158	35.5
VPS160S	DN160CF	203	147.6	128.5	173	52.5