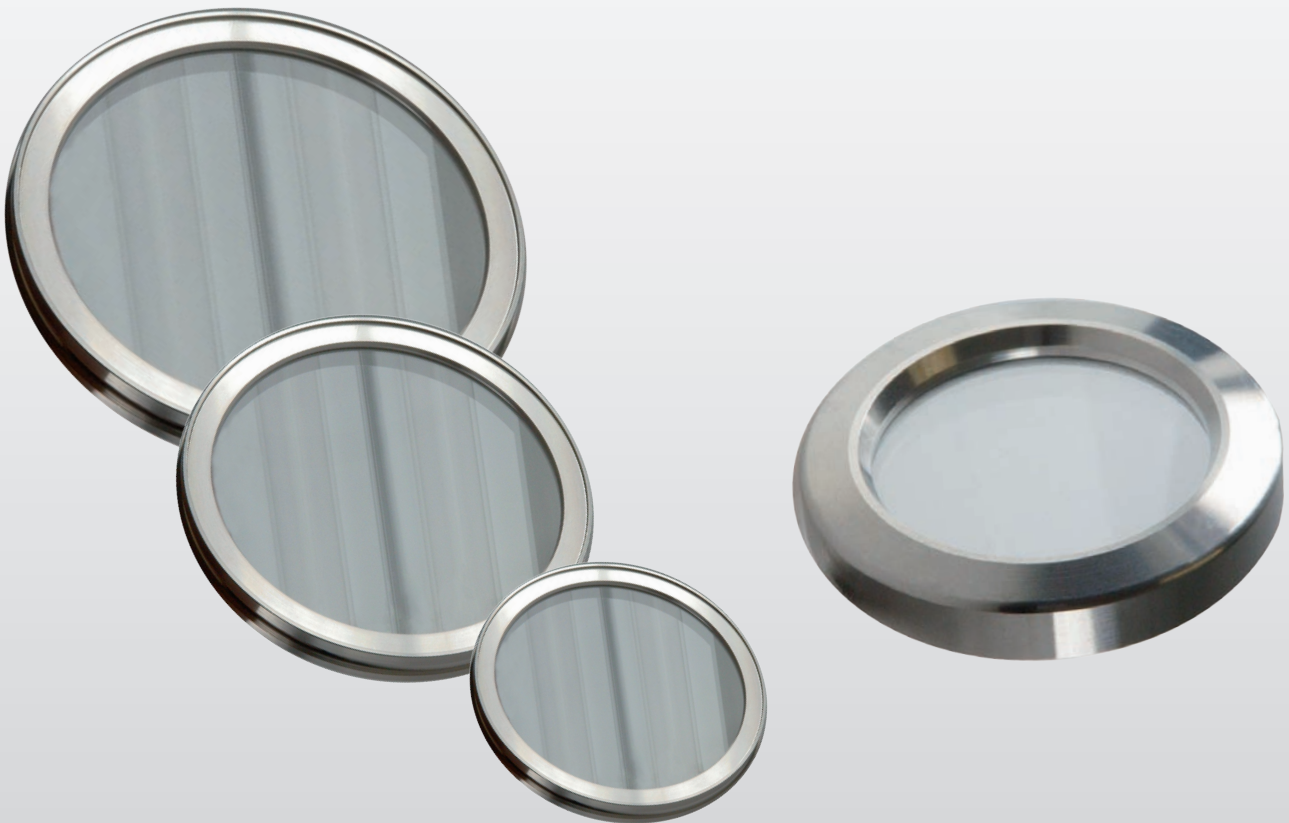


KF and ISO Standard Viewports

with demountable O-ring seal

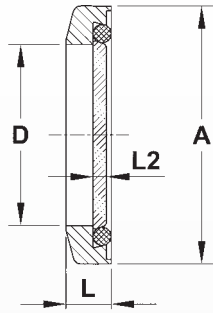
- Borosilicate and Quartz (Borofloat® 33 or Silux®)
- Easy mounting and demounting
- He leak rate < $1 \cdot 10^{-9}$ mbar l/s
- Bakeable up to 150 °C (with aluminium frame 120 °C)
- Anti-reflection coating on request



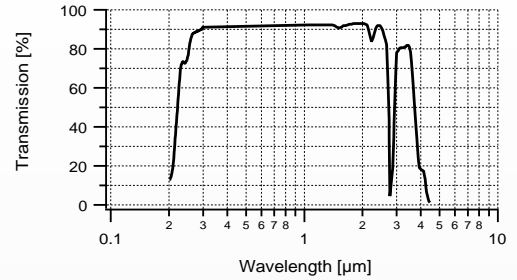
Technical Data



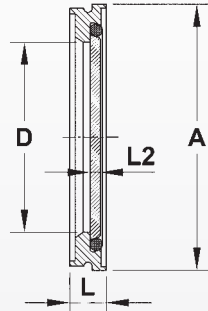
KF Viewport



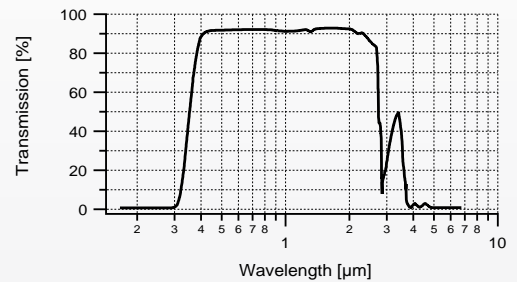
Schematic transmission of fused silica (Silux®)



ISO-K Viewport
(flange mounting)



Schematic transmission of borosilicate (Borofloat® 33)



Order Information

Order code		Flange	A	D	L	L2
Borosilicate	Quartz					
Flange connection: KF, T(max) = 150 °C						
VPKF40B-E-Z	VPKF40Q-E-Z	DN40KF	57	10	40	3,8
VPKF50B-E-Z	VPKF50Q-E-Z	DN50KF	77	10	50	3,8
Flange connection: ISO-K (flange mounting with clamps), T(max) = 150 °C						
VPISOK63B-E-Z	VPISOK63Q-E-Z	DN63ISO-K	98	70	14	3,8
VPISOK100B-E-Z	VPISOK100Q-E-Z	DN100ISO-K	133	102	13	5
VPISOK160B-E-Z	VPISOK160Q-E-Z	DN160ISO-K	183	153	17	9
VPISOK200B-E-Z	VPISOK200Q-E-Z	DN200ISO-K	243	200	17	13
Flange connection: ISO-F (wall mounting with screws), T(max) = 120 °C						
VPISOF63B-E	VPISOF63Q-E	DN63ISO-F	130	70	12	3,8
VPISOF100B-E	VPISOF100Q-E	DN100ISO-F	165	102	12	5
VPISOF160B-E	VPISOF160Q-E	DN160ISO-F	225	153	16	9
VPISOF200B-E	VPISOF200Q-E	DN200ISO-F	285	200	16	13
Flange connection: ISO-K (wall mounting with claw clamps), T(max) = 150 °C						
VPISOK63B-E	VPISOK63Q-E	DN63ISO-K	98	70	12	3,8
VPISOK100B-E	VPISOK100Q-E	DN100ISO-K	133	102	12	5
VPISOK160B-E	VPISOK160Q-E	DN160ISO-K	183	153	15	9
VPISOK200B-E	VPISOK200Q-E	DN200ISO-K	243	200	19	13

- Option: KF and ISO-K flange made of stainless steel 316L